



BilgMon 488

15 ppm Bilge Alarm

BILGE WATER DISCHARGE AND RELATED REGULATIONS

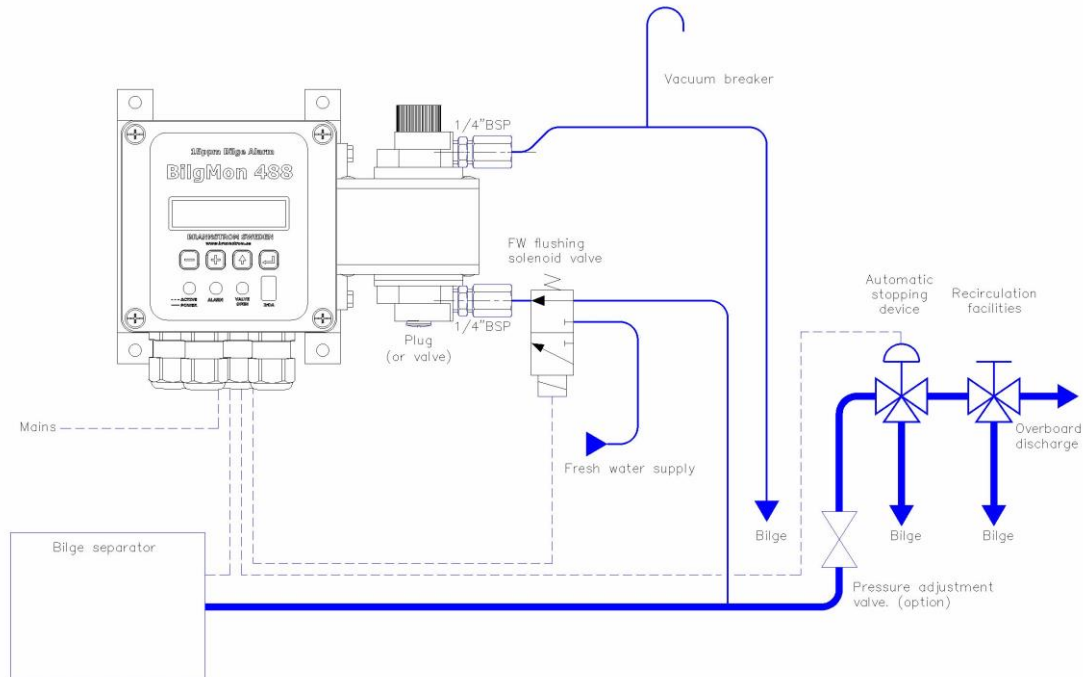
On vessels above 400 grt MARPOL Annex I regulates how bilge water should be treated and under which conditions it can be discharged over board. IMO also specifies how the discharge should be monitored, controlled, and recorded.

Port State Control inspects the condition and function of the equipment and installation as well as the past discharge records.

MONITORING AND CONTROL OF 15PPM BILGE SEPARATOR EFFLUENT

To meet the requirement of MARPOL Annex I and IMO Resolution MEPC.107(49), the bilge water must be treated with a type approved 15ppm Bilge Separator, the oil content of the treated water must be monitored with a type approved 15ppm Bilge Alarm, and in case of too high oil content, the water must be diverted back to the bilge by an Automatic Stopping Device (ASD) which is activated by the 15ppm bilge alarm. Additionally the 15ppm Bilge Alarm must record the operation status of the 15ppm Bilge Separator as well as any high oil content alarms and operation of the Automatic Stopping Device. Re-circulating facilities in the form of a 3-way valve must also be installed to enable test of the 15 ppm Bilge Separator system, including the 15 ppm Bilge Alarm and the Automatic Stopping Device, without actually discharging any water overboard.

General arrangement of 15ppm Bilge Separator with 15ppm Bilge Alarm and ASD



::
Brannstrom Sweden AB
Uddevallagatan 14
41670 Gothenburg, Sweden
Tel: +46 31 195600
Fax: +46 31 197790

::
info@brannstrom.se ♦ www.brannstrom.se





BilgMon 488

BILGMON 488

The 15ppm Bilge Alarm type BilgMon 488 meets the requirements and is type approved according to IMO Resolution MEPC.107(49).

IMO Resolution MEPC.107(49) contains specifications and type approval requirements separately for a 15ppm Bilge Separator and a 15ppm Bilge Alarm, so the type approval certificate of the 15ppm Bilge Alarm type BilgMon 488 is not limited to any specific make and model of 15ppm Bilge Separator. Due to its compact design and small dimensions, the BilgMon 488 can easily be used in combination with most 15ppm Bilge Separators. It is available in two basic versions, one for 115/230VAC supply voltage and one for 24V AC/DC supply voltage.



TECHNICAL AND INSTALLATION FEATURES

- Oil content range 0 – 30ppm (current output 0-20mA or 4-20mA)
- Type approvals according to MEPC.107(49)
- Power supply 115/230 VAC or 24V AC/DC
- Sensor unit with wireless communication, easy to replace
- Automatic fresh water flushing
- User interface LCD display and keypad
- Data retrieval via LCD display or USB
- Supplied complete with 3-way flushing valve, piping set, connectors
- Water temperature up to +45°C, exceeding MEPC.107(49) requirements
- Ambient temperature up to +55°C, exceeding MEPC.107(49) requirements
- Enclosure ingress protection rating IP 65

::

Brannstrom Sweden AB
Uddevallagatan 14
41670 Gothenburg, Sweden
Tel: +46 31 195600
Fax: +46 31 197790

::

info@brannstrom.se ♦ www.brannstrom.se

